

HAND KNOTTED
HAND TUFTED
HOSPITALITY

D A R E

CHRISTOPHER FAREED SIGNATURE RUGS

XXIII



A vanguard of the multifaceted design scene, Christopher Fareed Studios is a leading manufacturer of luxury rugs. For over two decades, Christopher Fareed has been the leading resource among trade professionals, receiving custom commissions for all types of residential, commercial and hospitality projects. With a portfolio highlighting various projects including dynamic workplaces, shopping malls, renowned restaurants and internationally acclaimed resort hotels, our work is a testament to our expertise and craftsmanship. We love when our clients share the same enthusiasm that we do when it comes to the design process behind creating your unique rug. From drafting the design and coordinating colors, to deciding on appropriate materials and constructions, our design team will encourage your involvement and outfit you with all the knowledge you need to call the shots. With us, you have the ability to choose the size, shape, design, construction, materials, and colors to create your rug.

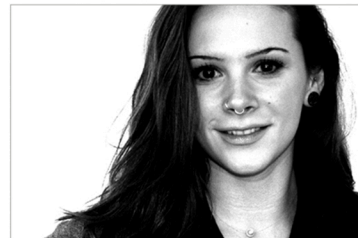
DESIGN TEAM

Our experienced, award-winning product development team will collaborate closely with you every step of the way to create inspired, one-of-a-kind designs that set your guest rooms and public spaces apart. You can count on our cutting edge looks to be fresh, fun, timeless and also stand up to the special challenges of hospitality, while still expressing the unique personality of your brand.

Whatever your needs, we make it easy to create the perfect look for your next design project. Bring your unique vision to life with Christopher Fareed and give yourself and your guests an experience to remember.



Matthew Babel



Tara Clugston



Brad Moody



Kayla Reimold



Cristian Kondratiuk



Samer Fareed



Chris Weir




Hieu Dao



Tahirih Alia



Stacy McNeal



Christopher Fareed is a multimedia artist, known by those close to him for his compulsive need to experiment. Although he focuses the majority of his energy on the Christopher Fareed line of rugs, his first and foremost favored mediums are in paint and sculpture art. Combining his constant experimentation with his near-perfectionist work ethic, his transition from paint and sculpture to textile arts seemed natural. Fareed prides himself in constantly re-defining the boundaries of rug making.

As a result, a vast collection of his paintings, collages and sculptures have been translated into several rug designs. Over the years he has cultivated an independent standing and business model that has allowed uncompromising artistic freedom and experimentation with radical structures and forms.

Some of his original work drew its influence from print media, pop art and grunge culture; exploring the use of these cultural trends and incorporating them into home decor. Fareed's use of color and texture has made waves in the rug industry.

He enjoys visually integrating the interiors with progressions of popular culture, principally reflecting modern trends and personality; incorporating individual style in existing architecture. Each rug is its own idiosyncrasy and acknowledgement of our evolving culture. Each rug with its own idiosyncrasy is a tribute to the current trends.

Fareed

CUSTOM

Christopher Fareed Studio specializes in providing bespoke rug solutions for Architecture and Design professionals in spaces that include hotels, corporate offices and luxury homes. We work closely with our clients to provide precision quality and outstanding service for all project environments.

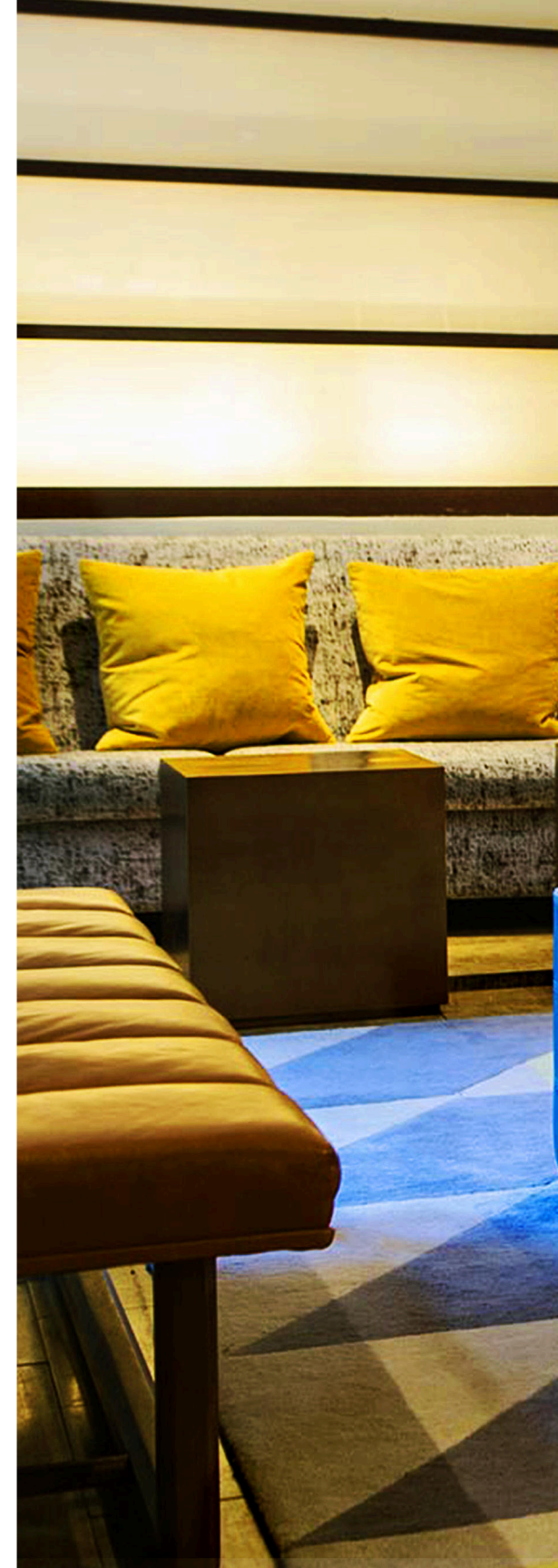
Combining the distinctive aesthetic of Christopher Fareed designs with state-of-the-art construction technologies, we have earned a reputation for being custom rug specialists within the industry.

Each individual order is personally handled, from conception to completion, to ensure a unique rug that exceeds each client's expectation with equal parts luxury, craftsmanship and appeal.

Any of our rug designs can be customized to any size, color or shape.

With over 2,000 color choices, we can match any industry color standards, such as PANTONE® or ARS™.

Or pick your own custom colors and they will be dyed to match your exact needs.







TECHNICAL

FIBERS



New Zealand Wool

Natural Silk

Banana Silk

Viscose

Felted Shag

Plant Fiber Sisal / Jute

Nylon

Polyester

Linen

Pashmina

Nettle

HAND KNOTTED

Products of a centuries-old form of weaving developed in the Tibetan highlands, hand knotted rugs are true masterpieces of the rug world. Masterfully woven with hand-dyed wool and silk by our skilled artisans, these rugs are composed of thousands of precise knots done by hand. Once complete, the rugs are expertly carved and finished, bringing the designs to life.

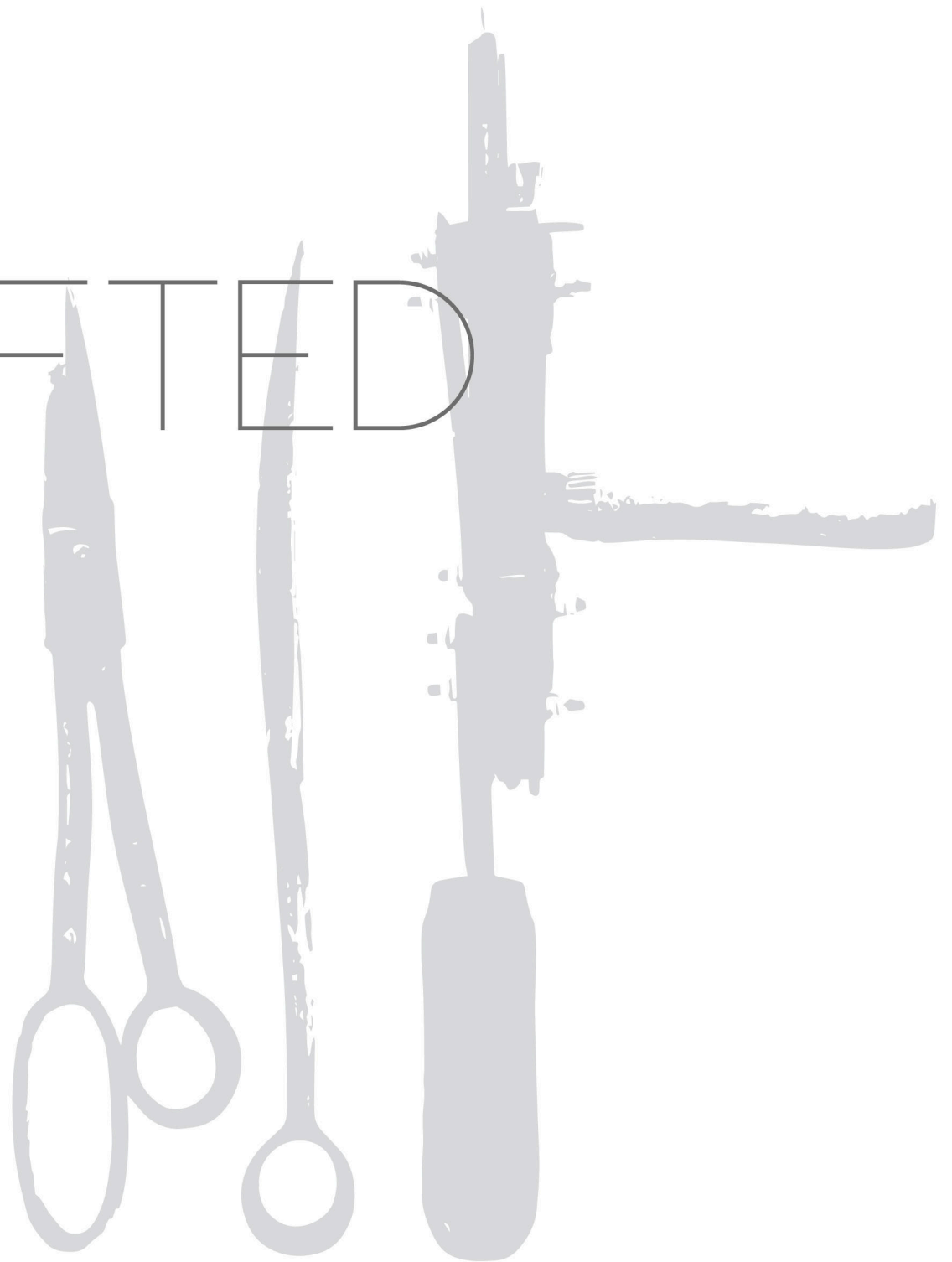
The Christopher Fareed Hand Knotted collection is a product of timeless craftsmanship. As a perfect marriage of art, luxury and functionality, these items are the ultimate way to elevate your interior.



HAND TUFTED

Tufted rugs are created by hand using a tool known as a tufting gun that punches and severs the yarn repeatedly through a supporting canvas backing. Once complete, these items are carved and finished to perfection.

Christopher Fareed's Signature rugs are expertly tufted to enhance intricate designs and detail variation. Hand tufted rugs are the staple for any home or commercial application, offering beautiful colors and detailing. Unleash your creative side and bring your space to life.



IMPORTANT



Christopher Fareed rugs are created using artisan techniques and we pay special attention to every aspect of detail. Afterward, each rug undergoes a thorough quality control inspection. Every item is custom made to your specification, ensuring the best result for your space.



Based on the needs of the customer, we manufacture custom one-of-a-kind rugs with tailored sizes, personalized colors and shapes for most of our designs.



All our rugs are made by hand, which means there may be some variation in color and any provided material. These variations do not represent manufacturing faults, nor do they affect the overall quality or durability of the rug.



Due to the nature of the ink used in this catalog, there may be some slight color variation between the image here and the colors on an electronic display.



dare \ˈder\

verb:

to have sufficient courage. to confront boldly.

try it if you DARE...

Bound II



- A
- B
- C
- D

Material: 100% New Zealand Wool
Construction: Hand Tufted

Price Group

Bound IV



- A
- B
- C
- D

Material: 100% New Zealand Wool
Construction: Hand Tufted

Price Group

Cat Walk



- A
- B
- C
- D

Material: 100% New Zealand Wool
Construction: Hand Tufted

Price Group

Come Now



- A
- B
- C
- D

Material: 100% New Zealand Wool
Construction: Hand Tufted

Price Group



A B C D

Material: 100% New Zealand Wool
Construction: Hand Tufted

Price Group



A B C D

Material: 100% New Zealand Wool
Construction: Hand Tufted

Price Group

David III

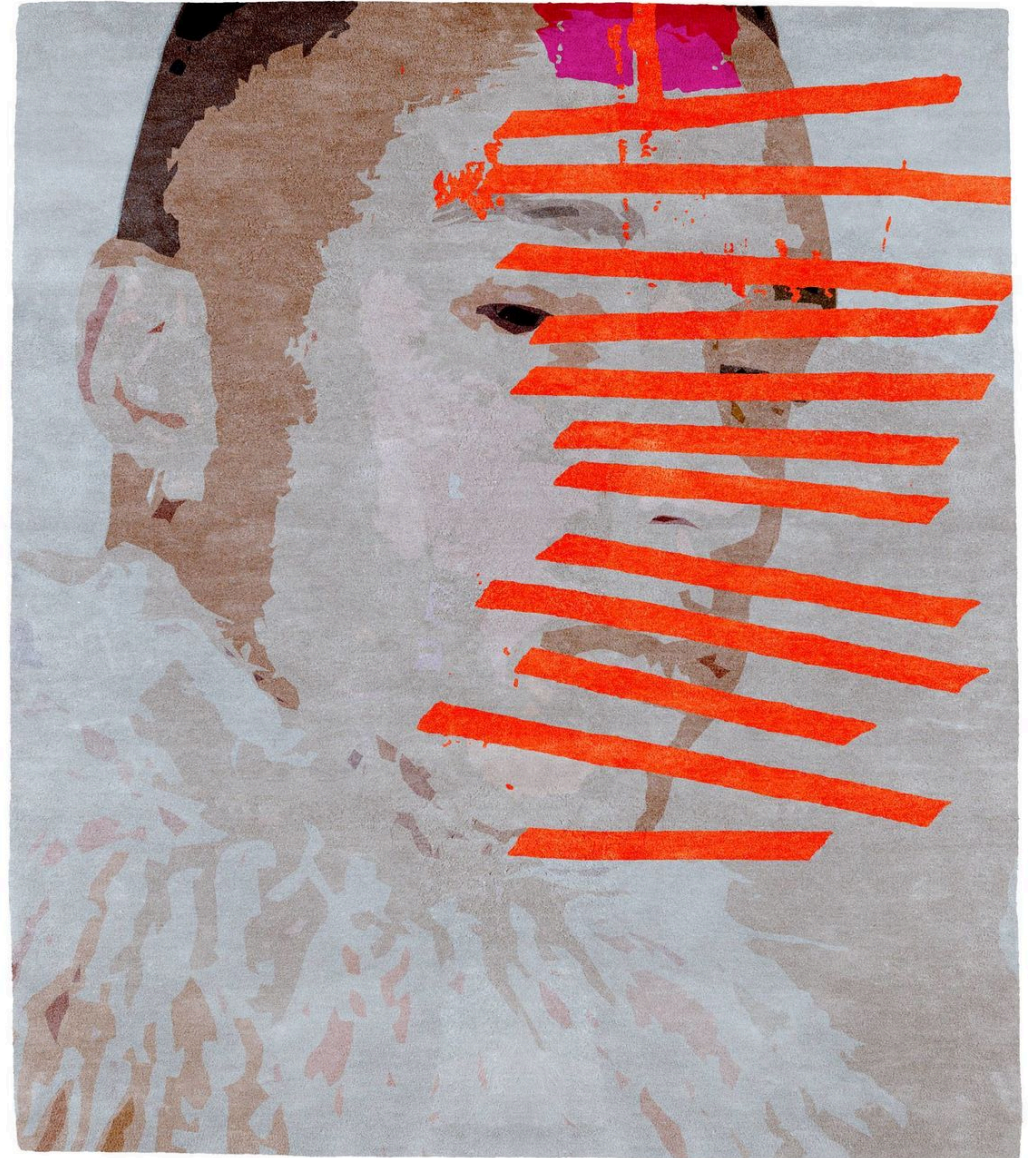


A B C D

Material: 100% New Zealand Wool
Construction: Hand Tufted

Price Group

Heffe



A B C D

Material: 100% New Zealand Wool
Construction: Hand Tufted

Price Group

Lips



A B C D

Material: 100% New Zealand Wool
Construction: Hand Tufted

Price Group

Liz



A B C D

Material: 100% New Zealand Wool
Construction: Hand Tufted

Price Group

Marquis



- A
- B
- C
- D

Material: 100% New Zealand Wool
Construction: Hand Tufted

Price Group

Marquis II



- A
- B
- C
- D

Material: 100% New Zealand Wool
Construction: Hand Tufted

Price Group

Pleasure II



A B C D

Material: 100% New Zealand Wool
Construction: Hand Tufted

Price Group

Red Lightly



A B C D

Material: 100% New Zealand Wool
Construction: Hand Tufted

Price Group

Remember



- A
- B
- C
- D

Material: 100% New Zealand Wool
Construction: Hand Tufted

Price Group

Shadows



- A
- B
- C
- D

Material: 100% New Zealand Wool
Construction: Hand Tufted

Price Group

Waiting



A B C D

Material: 100% New Zealand Wool
Construction: Hand Tufted

Price Group

Waiting II



A B C D

Material: 100% New Zealand Wool
Construction: Hand Tufted

Price Group

West



- A
- B
- C
- D

Material: 100% New Zealand Wool
Construction: Hand Tufted

Price Group

Ying And Ying



- A
- B
- C
- D

Material: 100% New Zealand Wool
Construction: Hand Tufted

Price Group

Amsterdam



- A
- B
- C
- D

Material: 100% New Zealand Wool
Construction: Hand Tufted

Price Group

Babe



- A
- B
- C
- D

Material: 100% New Zealand Wool
Construction: Hand Tufted

Price Group

Blaze



- A
- B
- C
- D

Material: 100% New Zealand Wool
Construction: Hand Tufted

Price Group

Dare Affair A



- A
- B
- C
- D

Material: 100% New Zealand Wool
Construction: Hand Tufted

Price Group

Dare Affair B



- A
- B
- C
- D

Material: 100% New Zealand Wool
Construction: Hand Tufted

Price Group

Dare Affair C



- A
- B
- C
- D

Material: 100% New Zealand Wool
Construction: Hand Tufted

Price Group

Dare Annis



A B C D

Material: 100% New Zealand Wool
Construction: Hand Tufted

Price Group

Dare Bow



A B C D

Material: 100% New Zealand Wool
Construction: Hand Tufted

Price Group

Dare Brazen V



- A
- B
- C
- D

Material: 100% New Zealand Wool
Construction: Hand Tufted

Price Group

Dare Brazen X



- A
- B
- C
- D

Material: 100% New Zealand Wool
Construction: Hand Tufted

Price Group

Dare Charade A



- A
- B
- C
- D

Material: 100% New Zealand Wool
Construction: Hand Tufted

Price Group

Dare Charade B



- A
- B
- C
- D

Material: 100% New Zealand Wool
Construction: Hand Tufted

Price Group

Dare Climax A



- A
- B
- C
- D

Material: 100% New Zealand Wool
Construction: Hand Tufted

Price Group

Dare Climax B



- A
- B
- C
- D

Material: 100% New Zealand Wool
Construction: Hand Tufted

Price Group

Dare Fifty Cents A



- A
- B
- C
- D

Material: 100% New Zealand Wool
Construction: Hand Tufted

Price Group

Dare Fifty Cents B



- A
- B
- C
- D

Material: 100% New Zealand Wool
Construction: Hand Tufted

Price Group

Dare Hidden Truth



- A
- B
- C
- D

Material: 100% New Zealand Wool
Construction: Hand Tufted

Price Group

Dare Hypnotic A



- A
- B
- C
- D

Material: 100% New Zealand Wool
Construction: Hand Tufted

Price Group

Dare Hypnotic B



A B C D

Material: 100% New Zealand Wool
Construction: Hand Tufted

Price Group

Dare Lace A



A B C D

Material: 100% New Zealand Wool
Construction: Hand Tufted

Price Group

Dare Lace B



Material: 100% New Zealand Wool
Construction: Hand Tufted

Price Group

Dare Lace C



Material: 100% New Zealand Wool
Construction: Hand Tufted

Price Group

Dare Lean A



- A
- B
- C
- D

Material: 90% New Zealand Wool, 10% Banana Silk
Construction: Hand Tufted

Price Group

Dare Lean B



- A
- B
- C
- D

Material: 100% New Zealand Wool
Construction: Hand Tufted

Price Group

Dare Lust A



- A
- B
- C
- D

Material: 100% New Zealand Wool
Construction: Hand Tufted

Price Group

Dare Lust B



- A
- B
- C
- D

Material: 100% New Zealand Wool
Construction: Hand Tufted

Price Group

Dare Revenge



- A
- B
- C
- D

Material: 100% New Zealand Wool
Construction: Hand Tufted

Price Group

Dare Risque A



- A
- B
- C
- D

Material: 100% New Zealand Wool
Construction: Hand Tufted

Price Group

Dare Risque B

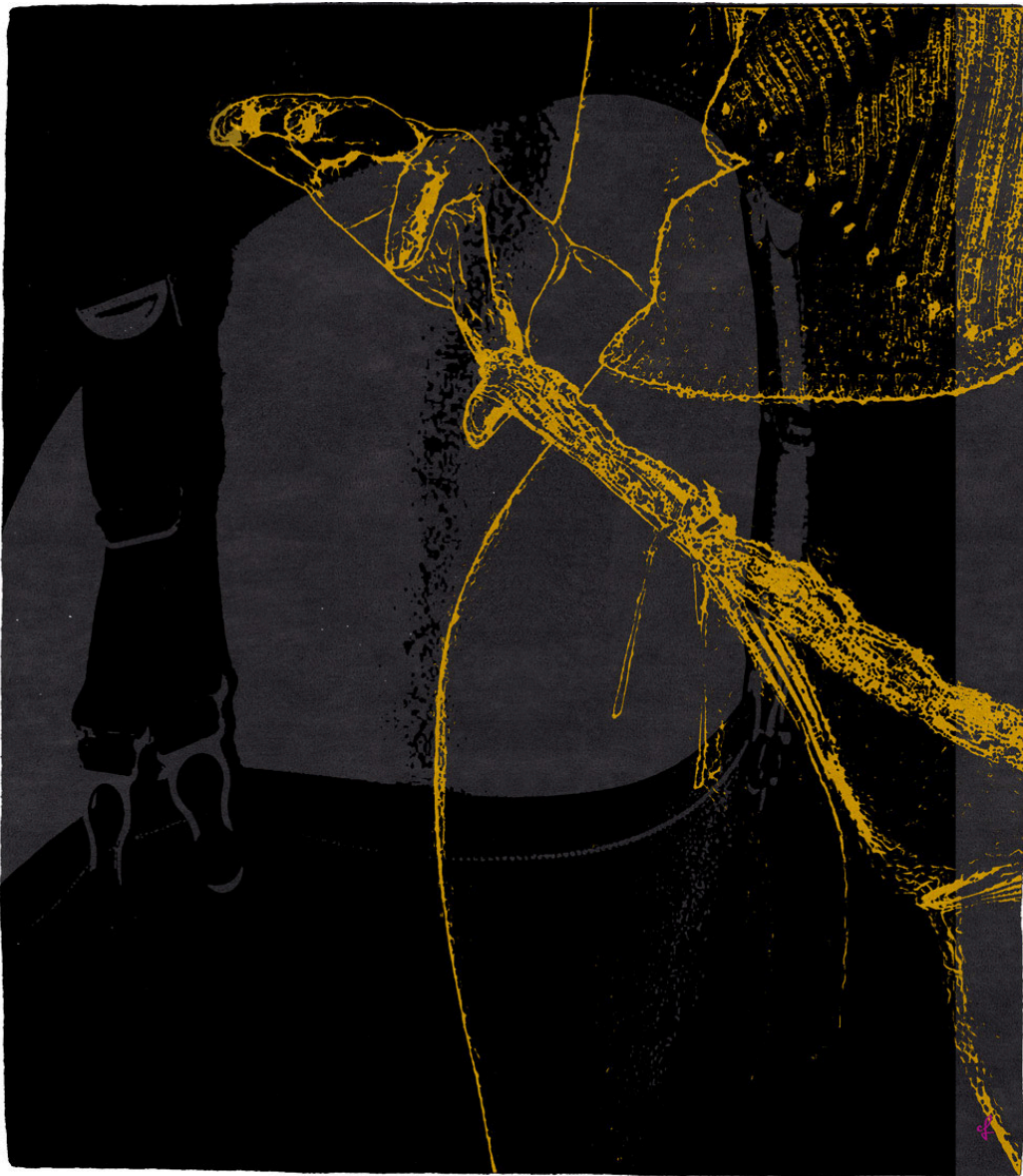


- A
- B
- C
- D

Material: 100% New Zealand Wool
Construction: Hand Tufted

Price Group

Dare Sumptuo



- A
- B
- C
- D

Material: 100% New Zealand Wool
Construction: Hand Tufted

Price Group

Dare Tantalize A



- A
- B
- C
- D

Material: 100% New Zealand Wool
Construction: Hand Tufted

Price Group

Dare Tantalize B

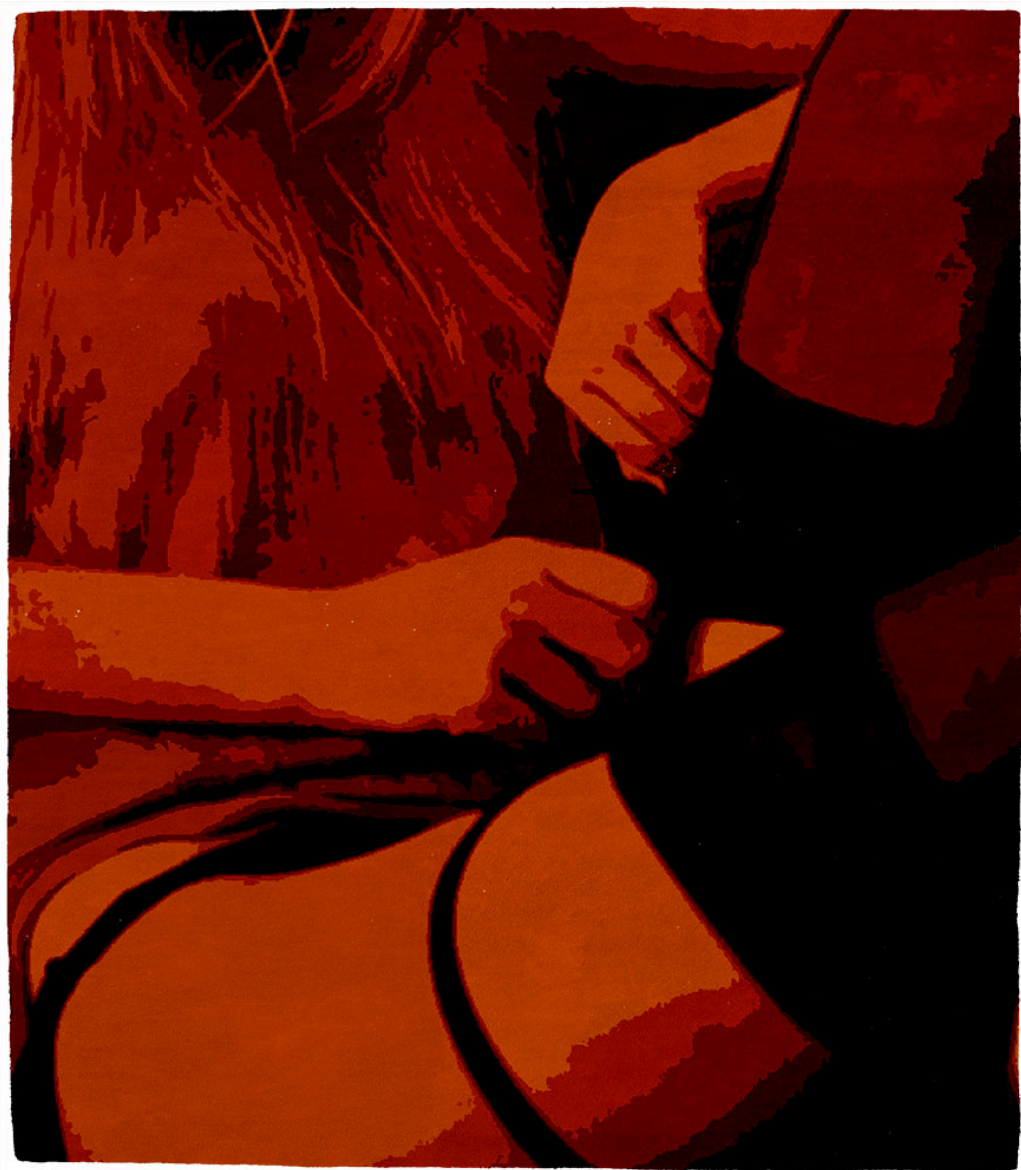


- A
- B
- C
- D

Material: 100% New Zealand Wool
Construction: Hand Tufted

Price Group

Dare Waiting Now



- A
- B
- C
- D

Material: 100% New Zealand Wool
Construction: Hand Tufted

Price Group

Fareed A



- A
- B
- C
- D

Material: 100% New Zealand Wool
Construction: Hand Tufted

Price Group

Fareed B



- A
- B
- C
- D

Material: 100% New Zealand Wool
Construction: Hand Tufted

Price Group

Form



- A
- B
- C
- D

Material: 100% New Zealand Wool
Construction: Hand Tufted

Price Group

Gala



Material: 90% New Zealand Wool / 10% Viscose
Construction: Hand Tufted

Price Group

Gaze Crimson



Material: 100% Premium New Zealand Wool
Construction: Hand Tufted

Price Group

Gaze Ebony



- A
- B
- C
- D

Material: 100% Premium New Zealand Wool
Construction: Hand Tufted

Price Group

Gaze Gray



- A
- B
- C
- D

Material: 100% Premium New Zealand Wool
Construction: Hand Tufted

Price Group

Gaze Lt Gray



Material: 100% Premium New Zealand Wool
Construction: Hand Tufted

Price Group

Geisha



Material: 100% New Zealand Wool
Construction: Hand Tufted

Price Group

Genome A



A B C D

Material: 100% New Zealand Wool
Construction: Hand Tufted

Price Group

Genome B



A B C D

Material: 100% New Zealand Wool
Construction: Hand Tufted

Price Group

Herculite

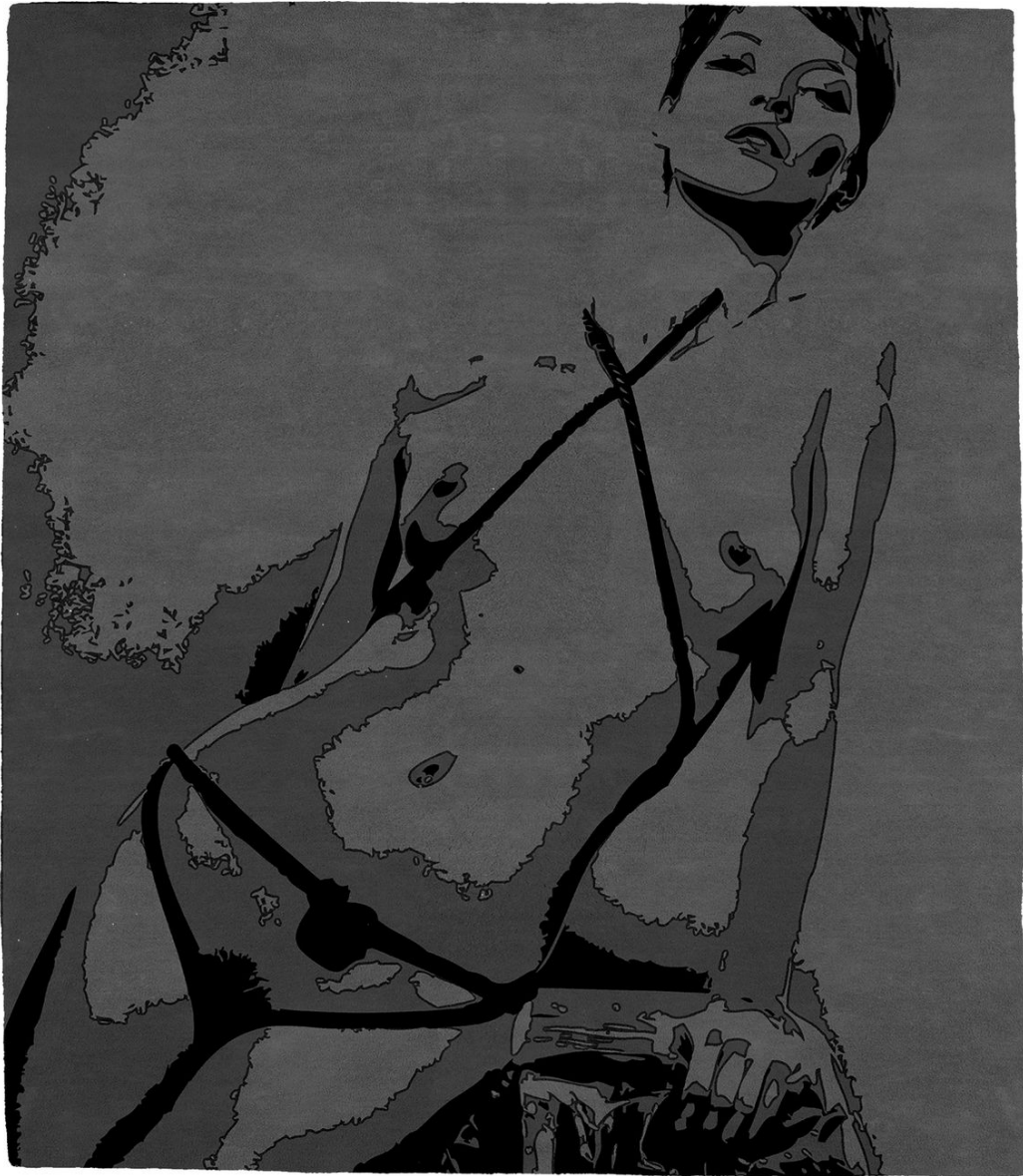


- A
- B
- C
- D

Material: 100% New Zealand Wool
Construction: Hand Tufted

Price Group

Hey A



- A
- B
- C
- D

Material: 100% New Zealand Wool
Construction: Hand Tufted

Price Group

Hey B



A B C D

Material: 100% New Zealand Wool
Construction: Hand Tufted

Price Group

Hug Me



A B C D

Material: 100% New Zealand Wool
Construction: Hand Tufted

Price Group

Just You A



- A
- B
- C
- D

Material: 100% New Zealand Wool
Construction: Hand Tufted

Price Group

Just You B



- A
- B
- C
- D

Material: 100% New Zealand Wool
Construction: Hand Tufted

Price Group

Kabuki



A B C D

Material: 100% New Zealand Wool
Construction: Hand Tufted

Price Group

Lost



A B C D

Material: 85% New Zealand Wool / 15% Viscose
Construction: Hand Tufted

Price Group

Mahasu A



A B C D

Material: 100% New Zealand Wool
Construction: Hand Tufted

Price Group

Mahasu B



A B C D

Material: 100% New Zealand Wool
Construction: Hand Tufted

Price Group

Morning Calm



Material: 100% New Zealand Wool
Construction: Hand Tufted

Price Group

Ofra Magenta



Material: 100% Premium New Zealand Wool
Construction: Hand Tufted

Price Group

Ofra Rust



- A
- B
- C
- D

Material: 100% Premium New Zealand Wool
Construction: Hand Tufted

Price Group

Red Light



- A
- B
- C
- D

Material: 100% New Zealand Wool
Construction: Hand Tufted

Price Group

Remnants



- A
- B
- C
- D

Material: 100% New Zealand Wool
Construction: Hand Tufted

Price Group

Reverence



- A
- B
- C
- D

Material: 100% New Zealand Wool
Construction: Hand Tufted

Price Group

Shadows



- A
- B
- C
- D

Material: 100% New Zealand Wool
Construction: Hand Tufted

Price Group

So It Goes A



- A
- B
- C
- D

Material: 100% New Zealand Wool
Construction: Hand Tufted

Price Group

So It Goes B



Material: 100% New Zealand Wool
Construction: Hand Tufted

Price Group

Temptress



Material: 100% New Zealand Wool
Construction: Hand Tufted

Price Group

Umohite B



- A
- B
- C
- D

Material: 100% New Zealand Wool
Construction: Hand Tufted

Price Group

Violin



- A
- B
- C
- D

Material: 100% New Zealand Wool
Construction: Hand Tufted

Price Group

Whimbrel A

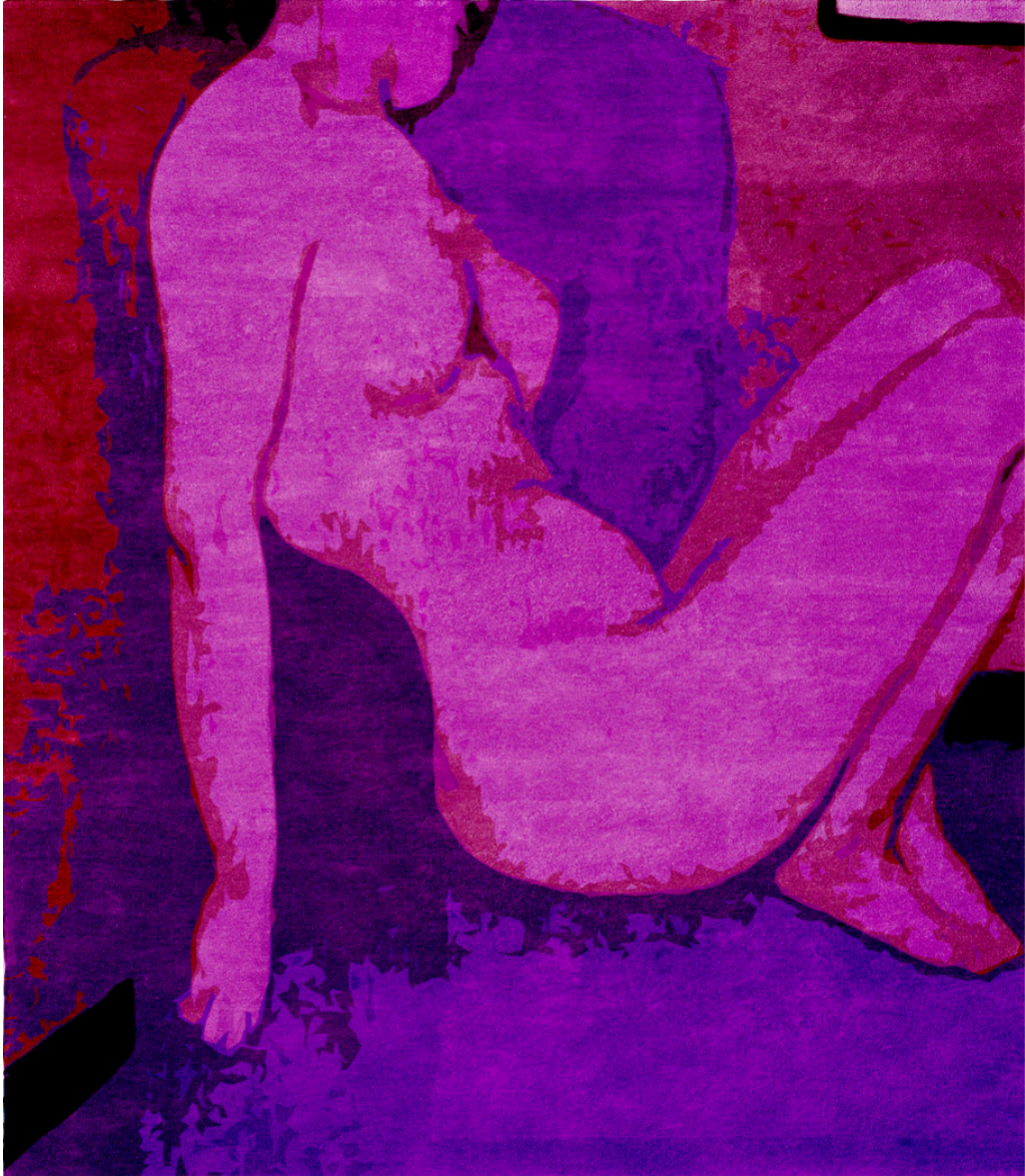


- A
- B
- C
- D

Material: 100% New Zealand Wool
Construction: Hand Tufted

Price Group

Whimbrel B



- A
- B
- C
- D

Material: 100% New Zealand Wool
Construction: Hand Tufted

Price Group

Whimbrel C



A B C D

Material: 100% New Zealand Wool
Construction: Hand Tufted

Price Group

Whimbrel D



A B C D

Material: 100% New Zealand Wool
Construction: Hand Tufted

Price Group

Whimbrel E



- A
- B
- C
- D

Material: 100% New Zealand Wool
Construction: Hand Tufted

Price Group

Whimbrel F



- A
- B
- C
- D

Material: 100% New Zealand Wool
Construction: Hand Tufted

Price Group

Whimbrel G



A B C D

Material: 100% New Zealand Wool
Construction: Hand Tufted

Price Group

Willing A



A B C D

Material: 90% New Zealand Wool / 10% Banana Silk
Construction: Hand Tufted

Price Group

Willing B



- A
- B
- C
- D

Material: 90% New Zealand Wool / 10% Banana Silk
Construction: Hand Tufted

Price Group

Dare First Time



- A
- B
- C
- D

Material: 100% New Zealand Wool
Construction: Hand Tufted

Price Group

Dare Wezen



- A
- B
- C
- D

Material: 100% New Zealand Wool
Construction: Hand Tufted

Price Group

Submit A



- A
- B
- C
- D

Material: 100% New Zealand Wool
Construction: Hand Tufted

Price Group

Submit B



- A
- B
- C
- D

Material: 100% New Zealand Wool
Construction: Hand Tufted

Price Group

Submit C



- A
- B
- C
- D

Material: 100% New Zealand Wool
Construction: Hand Tufted

Price Group

Submit D



Material: 100% New Zealand Wool
Construction: Hand Tufted

Price Group

Submit E



Material: 100% New Zealand Wool
Construction: Hand Tufted

Price Group

Babel Blue



- A
- B
- C
- D

Material: 100% Premium New Zealand Wool
Construction: Hand Tufted

Price Group

Babel Dark Pumpkin



- A
- B
- C
- D

Material: 100% Premium New Zealand Wool
Construction: Hand Tufted

Price Group

Babel Gold



- A
- B
- C
- D

Material: 100% Premium New Zealand Wool
Construction: Hand Tufted

Price Group

Babel Mustard



- A
- B
- C
- D

Material: 100% Premium New Zealand Wool
Construction: Hand Tufted

Price Group

Babel Pistachio



- A
- B
- C
- D

Material: 100% Premium New Zealand Wool
Construction: Hand Tufted

Price Group

Babel Red



- A
- B
- C
- D

Material: 100% Premium New Zealand Wool
Construction: Hand Tufted

Price Group

Womb



- A
- B
- C
- D

Material: 100% New Zealand Wool
Construction: Hand Knotted

Price Group

I See



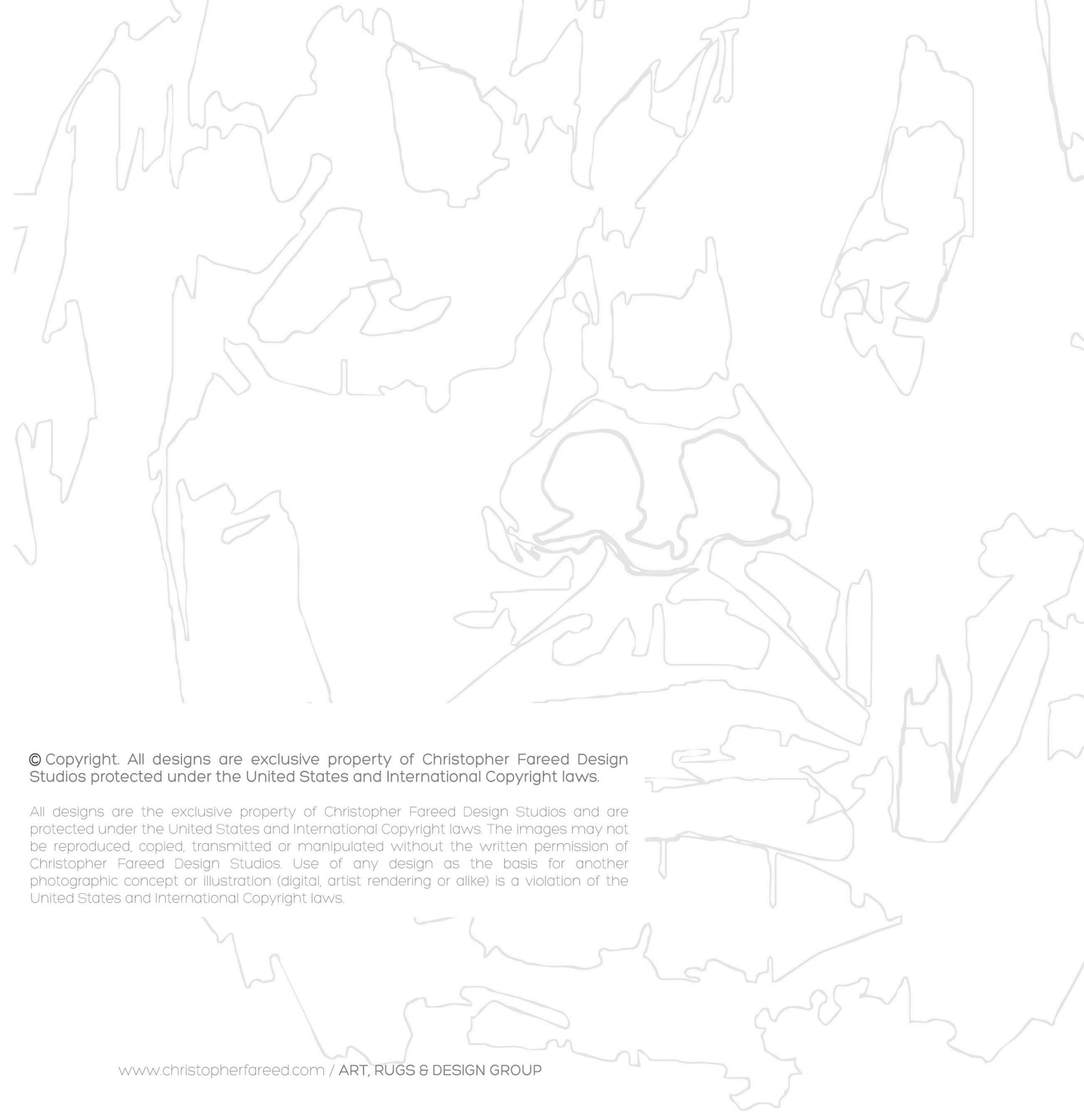
- A
- B
- C
- D

Material: 60% Banana Silk / 40% New Zealand Wool
Construction: Hand Knotted

Price Group

Dare Rugs

| | | | | | |
|--------------------|----|------------------|----|---------------|----|
| Amsterdam | 27 | Dare Risque B | 41 | Remnants | 56 |
| Babe | 27 | Dare Sumptuo | 41 | Reverence | 56 |
| Babel Blue | 68 | Dare Tantalize A | 42 | Shadows | 24 |
| Babel Dark Pumpkin | 68 | Dare Tantalize B | 42 | Shadows | 57 |
| Babel Gold | 69 | Dare Waiting Now | 43 | So It Goes A | 57 |
| Babel Mustard | 69 | Dare Wezen | 65 | So It Goes B | 58 |
| Babel Pistachio | 70 | David | 19 | Submit A | 65 |
| Babel Red | 70 | David II | 19 | Submit B | 66 |
| Blaze | 28 | David III | 20 | Submit C | 66 |
| Bound II | 17 | Fareed A | 43 | Submit D | 67 |
| Bound IV | 17 | Fareed B | 44 | Submit E | 67 |
| Cat Walk | 18 | Form | 44 | Temptress | 58 |
| Come Now | 18 | Gala | 45 | Umohite B | 59 |
| Dare Affair A | 28 | Gaze Crimson | 45 | Violin | 59 |
| Dare Affair B | 29 | Gaze Ebony | 46 | Waiting | 25 |
| Dare Affair C | 29 | Gaze Gray | 46 | Waiting II | 25 |
| Dare Annis | 30 | Gaze Lt Gray | 47 | West | 26 |
| Dare Bow | 30 | Geisha | 47 | Whimbrel A | 60 |
| Dare Brazen V | 31 | Genome A | 48 | Whimbrel B | 60 |
| Dare Brazen X | 31 | Genome B | 48 | Whimbrel C | 61 |
| Dare Charade A | 32 | Hefte | 20 | Whimbrel D | 61 |
| Dare Charade B | 32 | Herculite | 49 | Whimbrel E | 62 |
| Dare Climax A | 33 | Hey A | 49 | Whimbrel F | 62 |
| Dare Climax B | 33 | Hey B | 50 | Whimbrel G | 63 |
| Dare Fifty Cents A | 34 | Hug Me | 50 | Willing A | 63 |
| Dare Fifty Cents B | 34 | I See | 71 | Willing B | 64 |
| Dare First Time | 64 | Just You A | 51 | Womb | 71 |
| Dare Hidden Truth | 35 | Just You B | 51 | Ying and Ying | 26 |
| Dare Hypnotic A | 35 | Kabuki | 52 | | |
| Dare Hypnotic B | 36 | Lips | 21 | | |
| Dare Lace A | 36 | Liz | 21 | | |
| Dare Lace B | 37 | Lost | 52 | | |
| Dare Lace C | 37 | Mahasu A | 53 | | |
| Dare Lean A | 38 | Mahasu B | 53 | | |
| Dare Lean B | 38 | Marquis | 22 | | |
| Dare Lust A | 39 | Marquis II | 22 | | |
| Dare Lust B | 39 | Morning Calm | 54 | | |
| Dare Revenge | 40 | Ofra Magenta | 54 | | |
| Dare Risque A | 40 | Ofra Rust | 55 | | |
| | | Pleasure II | 23 | | |
| | | Red Light | 55 | | |
| | | Red Lightly | 23 | | |
| | | Remember | 24 | | |



© Copyright. All designs are exclusive property of Christopher Fareed Design Studios protected under the United States and International Copyright laws.

All designs are the exclusive property of Christopher Fareed Design Studios and are protected under the United States and International Copyright laws. The images may not be reproduced, copied, transmitted or manipulated without the written permission of Christopher Fareed Design Studios. Use of any design as the basis for another photographic concept or illustration (digital, artist rendering or alike) is a violation of the United States and International Copyright laws.

CHRISTOPHER FAREED SIGNATURE RUGS

CHRISTOPHER FAREED STUDIO / ART, RUGS & DESIGN GROUP

NORTH AMERICA

1404 N 3rd St.
Harrisburg, PA 17102, USA
T: + 1.717.857.7986 (Intl)
T: 1.800.830.7847

EUROPE

Roerdomp 41
3755 GG Eemnes
The Netherlands
T: + 31-621-266-255

ONLINE

ModernRugs.com
ChristopherFareed.com
ModernDesignerRugs.com
HipRugs.com

www.christopherfareed.com / ART, RUGS & DESIGN GROUP

© Copyright.

All designs are exclusive property of Christopher Fareed Design Studios
protected under the United States and International Copyright laws.

Christopher Fareed